

Complete Servo Drive System

One-cable solution provides seamless connectivity

Festo's CMMT-AS is a compact servo drive known for dynamic and precise movements, while the CMMT-ST controller suits simpler tasks with low power needs. Both seamlessly integrate into #controlsystems, offering easy commissioning via Festo Automation Suite (FAS).

- ✓ Multiprotocol: communication type selected directly in the servo drive
- ✓ Compact size: one of the smallest drives compared to its competitors
- ✓ Easy configuration thanks to the Festo Automation Suite (FAS)
- ✓ Compatible with world class electric actuators and gantries

FESTO



READ MORE

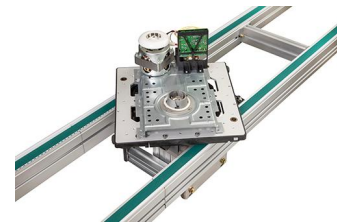
Dorner DualMove Pallet Conveyor

Precise product orientation and position

Dorner's DualMove pallet conveyor is a new and improved twin-strand pallet conveyor with increased weight capacity and expanded customization options.. The **highly advanced DualMove Pallet System for assembly automation** is ideal for increasing the efficiency, generation, and precision of pallet traffic.

- Dual T10 timing belt conveyors with steel cords
- Standard pallet widths: 160, 240, 320, 400, 480, 640, and 800 mm
- Aluminum extruded frame with universal T-Slot
- Quick belt change without conveyor removal

DORNER



READ MORE

New High Payload EC-S8 ELECYLINDER

Brute force with finesse

With an impressive maximum payload of 80kg, the new EC-S8 ELECYLINDER series offers exceptional transportability.

Available at an affordable price, due to its efficient pulse motor, the EC-S8 slider type lineup features 9 new models, including options with extended strokes and cleanroom specifications.

The innovative extended stroke intermediate support mechanism is the key to achieving a maximum stroke of 1500mm! With just two setting items, namely the start point and end point, configuring the EC-S8 is incredibly simplified.

IAI
Quality and Innovation



LEARN MORE

FJS Series Metric-Interchange Cylinders

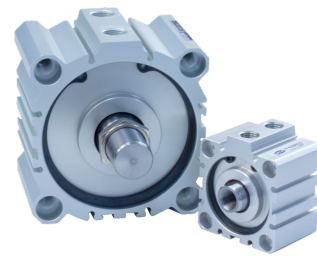
Drop-in replacements for other manufacturers

Fabco's FJS Series of short-stroke air cylinders deliver excellent performance and reliability, and their flexible options ensure easy application without compromising performance.

FABCO-AIR
A member of Festo Group

Pressure rated to 145 psi, the **FJS Series is directly interchangeable with other metric-specified air cylinders** of the same bore size. FJS cylinder bore sizes range from 12 to 100 millimeters (mm), while stroke lengths range from 5 to 100 mm.

Flexible installation with various mounting styles and metric or inch rod thread end-mount configurations.



[LEARN MORE](#)

Bertelkamp Automation | 800-251-9134 | info@bertelkamp.com | bertelkamp.com

Bertelkamp Automation, Inc | 4716 Middle Creek Lane, Knoxville, TN 37921

[Unsubscribe ehaas@bertelkamp.com](mailto:ehaas@bertelkamp.com)

[Update Profile](#) | [Constant Contact Data Notice](#)

Sent by ehaas@bertelkamp.com powered by



Try email marketing for free today!